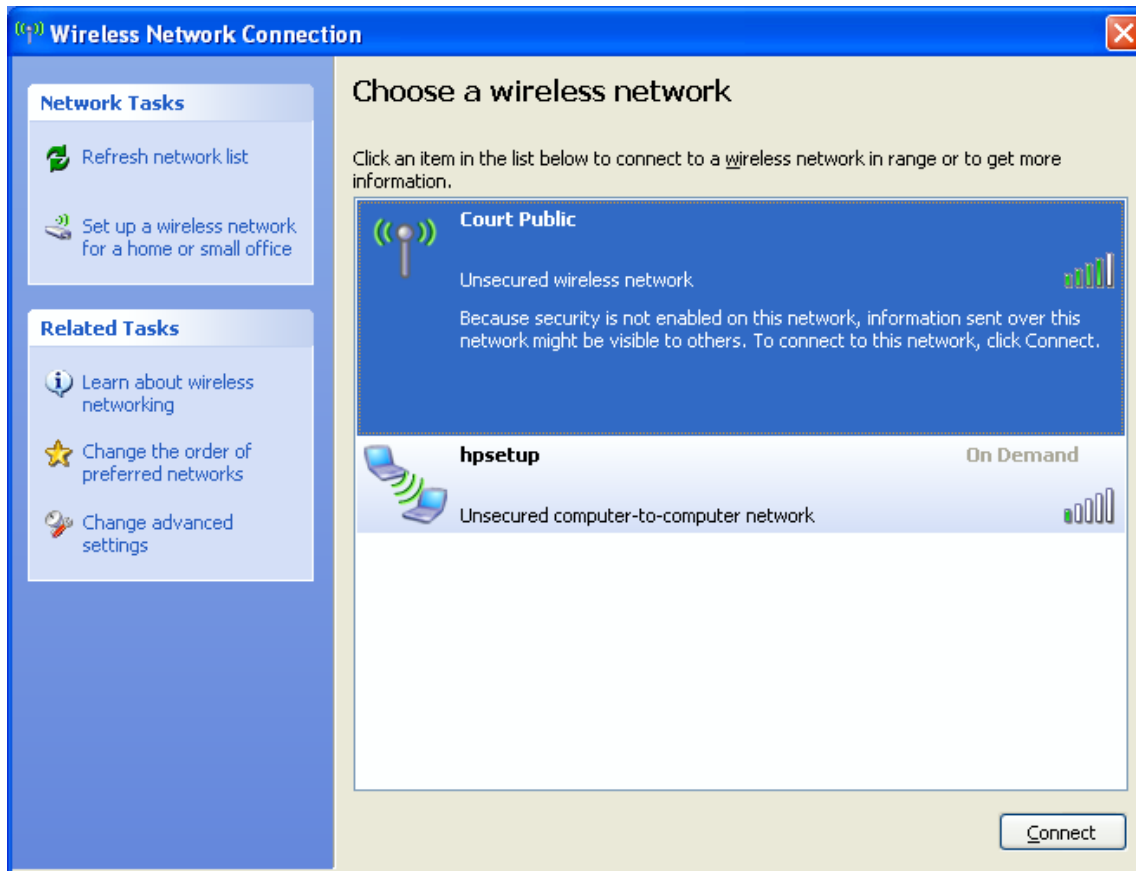




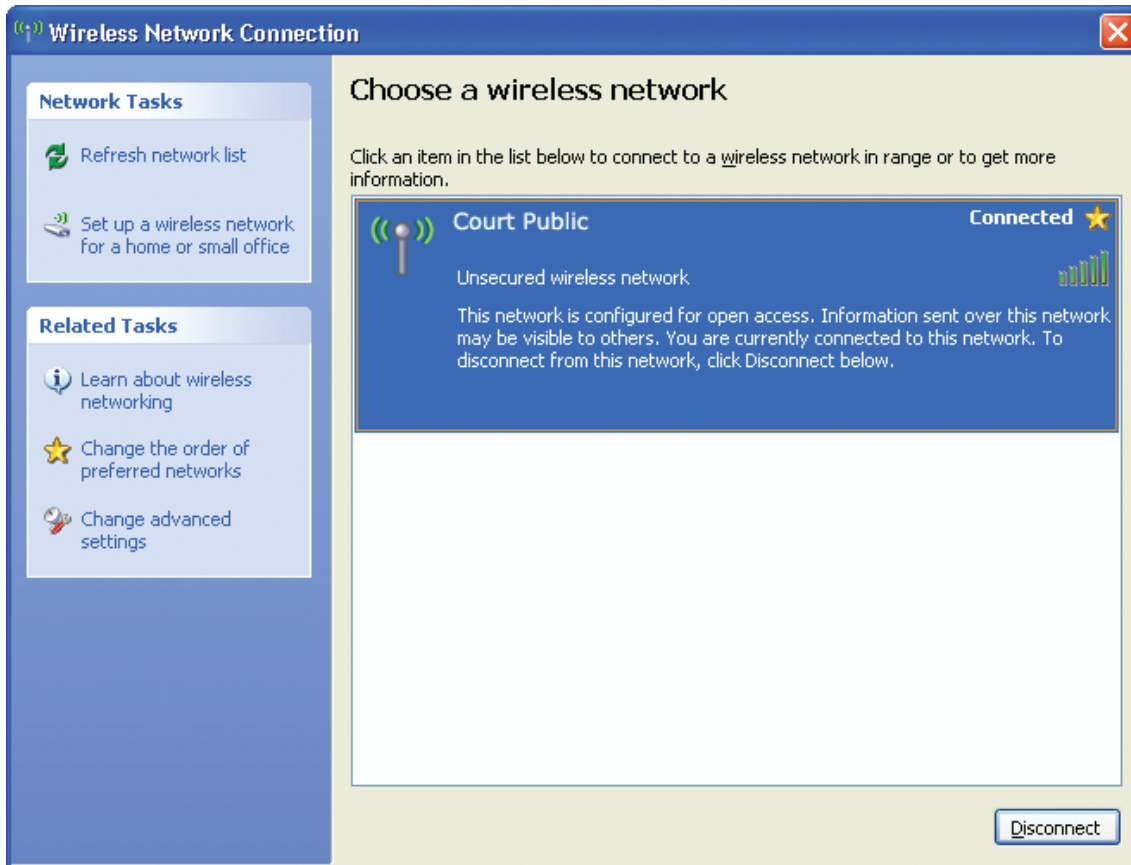
Click on **Court Public** to highlight and click on the **Connect** button.



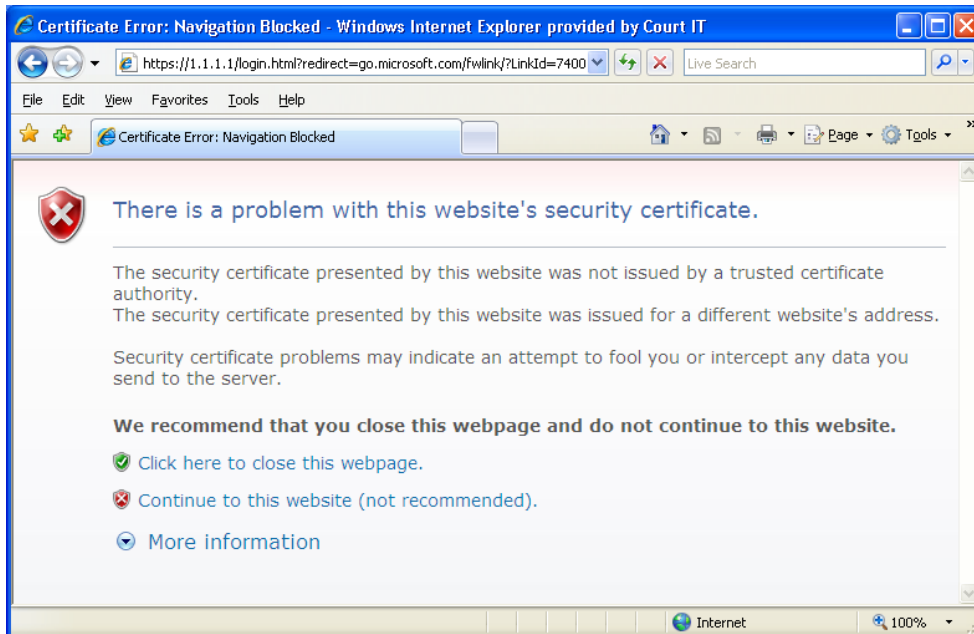
It will take a few seconds to connect.



You should now be connected.



Now you need to open up a web browser. You will see a warning about the security certificate which is expected. Click on ***Continue to this Website (not recommended)***.



Enter *Public* for the User Name and *Solano* for the Password at the Login screen.

Note: Both User Name and Password are case sensitive.

